
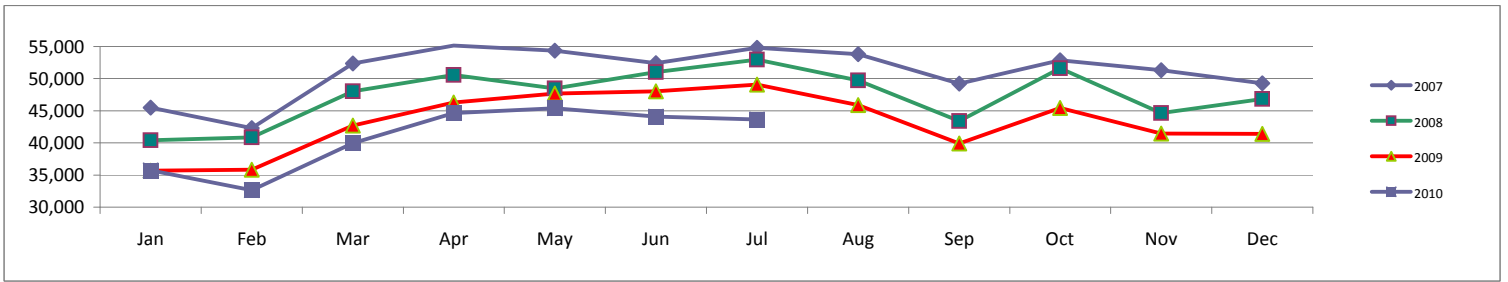


AIRPORT OPERATIONS SUMMARY OF KEY ACTIVITIES

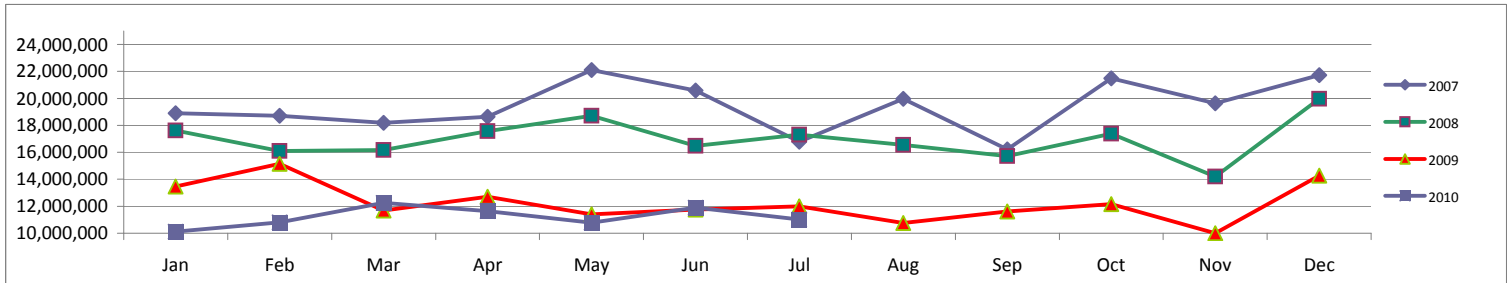
 COLUMBIA METROPOLITAN AIRPORT	Month			Year-to-Date		
	Jul-10	Jul-09	% Change	2010	2009	% Change
ENPLANED PASSENGERS						
AMERICAN EAGLE	3,665	3,979	-7.89%	23,156	23,168	-0.05%
UNITED EXPRESS	7,032	7,304	-3.72%	47,237	48,163	-1.92%
CONTINENTAL	2,341	3,603	-35.03%	13,231	25,549	-48.21%
DELTA	18,687	19,820	-5.72%	118,759	123,689	-3.99%
PIEDMONT / US AIRWAYS	11,922	12,206	-2.33%	83,699	74,498	12.35%
SPIRIT	0	0	0.00%	0	2,260	-100.00%
ALLEGiant	0	2,141	-100.00%	0	7,933	-100.00%
Enplaned Passenger Total	43,647	49,053	-11.02%	286,082	305,260	-6.28%
LANDED WEIGHT (1,000 LB UNITS)						
AMERICAN EAGLE	4,014	4,076	-1.52%	23,332	27,194	-14.20%
UNITED EXPRESS	9,882	11,085	-10.85%	56,378	74,621	-24.45%
CONTINENTAL	2,645	4,020	-34.20%	14,558	34,769	-58.13%
DELTA	22,712	23,805	-4.59%	129,251	171,902	-24.81%
PIEDMONT / US AIRWAYS	16,222	16,564	-2.06%	97,586	118,297	-17.51%
SPIRIT	0	0	0.00%	0	3,444	-100.00%
ALLEGiant	0	2,989	-100.00%	0	12,105	-100.00%
Subtotal	55,475	62,539	-11.30%	321,105	442,332	-27.41%
MOUNTAIN AIR CARGO	759	796	-4.65%	4,591	5,447	-15.72%
FEDERAL EXPRESS	6,342	9,865	-35.71%	38,885	62,449	-37.73%
UNITED PARCEL SERVICE	21,699	35,274	-38.48%	157,084	275,612	-43.01%
ABX	0	0	0.00%	0	1,122	-100.00%
Subtotal	28,800	45,935	-37.30%	200,560	344,630	-41.80%
Landed Weight Total	84,275	108,474	-22.31%	521,665	786,962	-33.71%
LANDINGS						
AMERICAN EAGLE	92	93	-1.08%	534	630	-15.24%
UNITED EXPRESS	213	235	-9.36%	1,193	1,583	-24.64%
CONTINENTAL	61	89	-31.46%	334	793	-57.88%
DELTA	433	500	-13.40%	2,446	3,265	-25.08%
PIEDMONT / US AIRWAYS	363	365	-0.55%	2,122	2,627	-19.22%
SPIRIT	0	0	0.00%	0	25	-100.00%
ALLEGiant	0	22	-100.00%	0	88	-100.00%
Subtotal	1,162	1,304	-10.89%	6,629	9,011	-26.43%
MOUNTAIN AIR CARGO	21	22	-4.55%	195	182	7.14%
FEDERAL EXPRESS	39	41	-4.88%	203	248	-18.15%
UNITED PARCEL SERVICE	79	127	-37.80%	564	1,021	-44.76%
ABX	0	0	0.00%	0	11	-100.00%
Subtotal	139	190	-26.84%	962	1,462	-34.20%
Landings Total	1,301	1,494	-12.92%	7,591	10,473	-27.52%
ENPLANED FREIGHT / CARGO						
DELTA	0	0	0.00%	0	32	-100.00%
Subtotal	0	0	0.00%	0	32	-100.00%
MOUNTAIN AIR CARGO	53	52	1.92%	303	333	-9.01%
FEDERAL EXPRESS	640	1063	-39.79%	3,933	6,429	-38.82%
UNITED PARCEL SERVICE	1,852	1996	-7.21%	11,958	16,302	-26.65%
ABX	0	0	0.00%	0	40	-100.00%
Subtotal	2,545	3,111	-18.19%	16,194	23,104	-29.91%
Enplaned Cargo Total	2,545	3,111	-18.19%	16,194	23,136	-30.01%

**MONTHLY ENPLANED PASSENGERS
2009-2010**



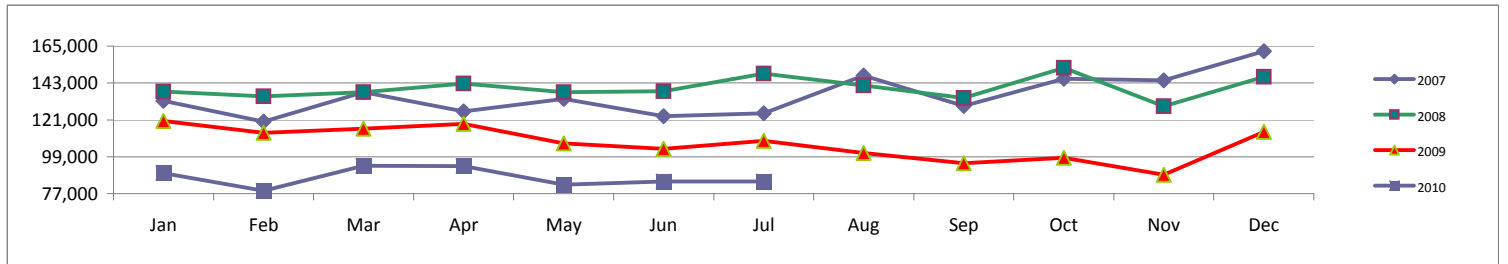
	Jan	Feb	Mar	Apr	May	Jun	Jul	Aug	Sep	Oct	Nov	Dec	Grand Total
2007	45,499	42,296	52,339	55,135	54,339	52,403	54,779	53,793	49,235	52,840	51,305	49,270	613,233
2008	40,429	40,876	48,030	50,548	48,464	51,030	52,966	49,702	43,382	51,614	44,656	46,823	568,520
2009	35,661	35,848	42,683	46,290	47,685	48,040	49,053	45,905	39,915	45,426	41,461	41,407	519,374
2010	35,739	32,645	39,942	44,627	45,370	44,112	43,647						286,082

**MONTHLY TOTAL CARGO
2007-2010**



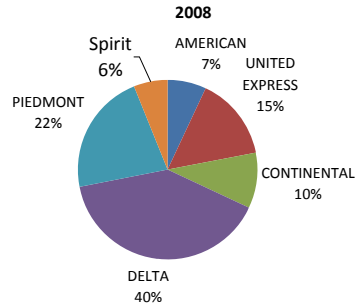
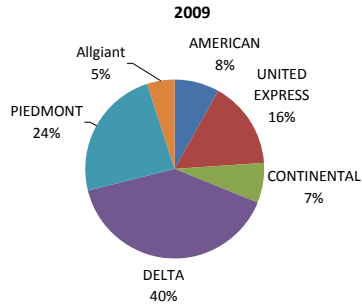
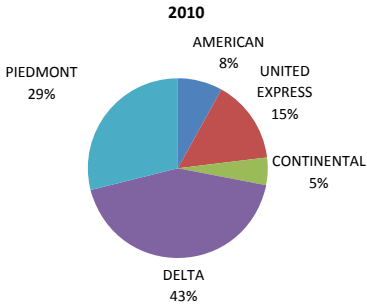
	Jan	Feb	Mar	Apr	May	Jun	Jul	Aug	Sep	Oct	Nov	Dec	Grand Total
2007	18,906,000	18,706,000	18,192,000	18,632,000	22,100,000	20,582,000	16,794,000	19,964,000	16,210,000	21,484,000	19,636,000	21,714,000	232,920,000
2008	17,608,000	16,098,000	16,170,000	17,572,000	18,710,000	16,490,000	17,304,000	16,550,000	15,718,000	17,382,000	14,194,000	19,972,000	203,768,000
2009	13,462,000	15,142,000	11,696,000	12,706,000	11,412,000	11,766,000	12,004,000	10,762,000	11,624,000	12,148,000	10,006,000	14,284,000	147,012,000
2010	10,108,000	10,796,000	12,252,000	11,634,000	10,780,000	11,906,000	11,010,000						78,486,000

**MONTHLY LANDED WEIGHT - 1,000 lb UNITS
2007-2010**

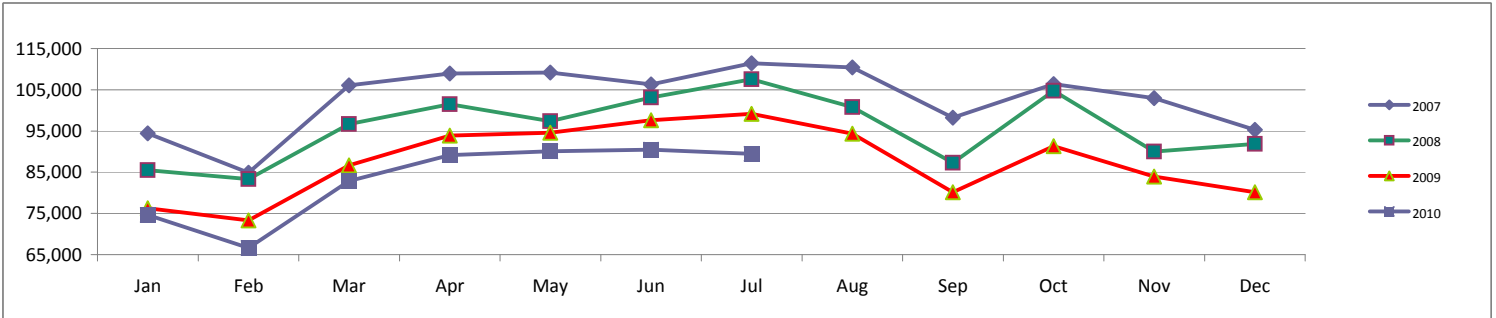


	Jan	Feb	Mar	Apr	May	Jun	Jul	Aug	Sep	Oct	Nov	Dec	Grand Total
2007	132,379	119,898	137,479	126,034	133,449	123,119	124,988	147,394	129,242	145,537	144,654	161,947	1,626,120
2008	137,970	134,938	137,605	142,613	137,510	138,029	148,636	141,500	133,986	151,986	129,143	146,766	1,680,682
2009	120,399	113,235	115,695	118,528	106,891	103,739	108,474	101,179	95,091	98,384	88,327	113,770	1,283,712
2010	89,186	78,781	93,615	93,351	82,421	84,311	84,275						605,940

YEAR - TO - DATE MARKET SHARE BY CARRIER

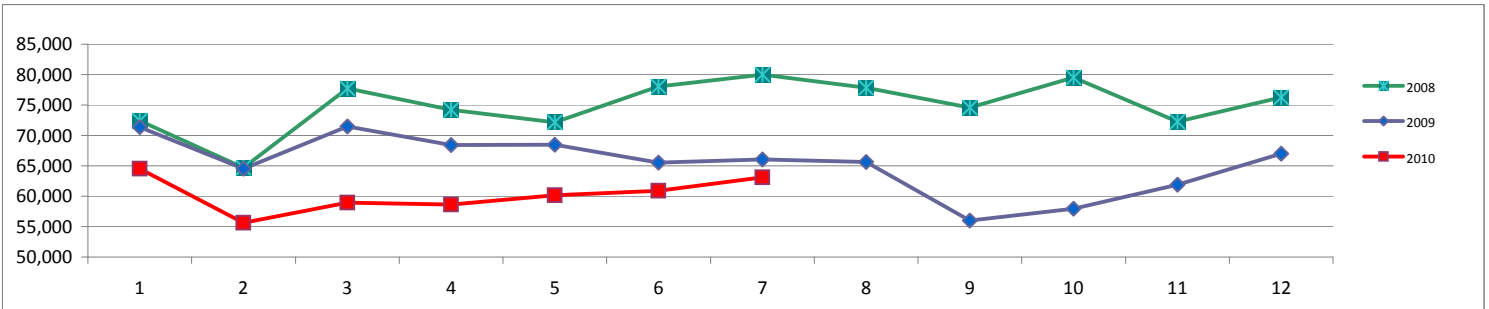


MONTHLY TOTAL PASSENGERS
2007-2010



	Jan	Feb	Mar	Apr	May	Jun	Jul	Aug	Sep	Oct	Nov	Dec	Grand Total
2007	94,387	84,896	106,042	108,963	109,204	106,336	111,460	110,396	98,200	106,419	102,945	95,299	1,234,547
2008	85,494	83,340	96,697	101,508	97,353	103,114	107,585	100,765	87,261	104,722	89,982	91,861	1,149,682
2009	76,243	73,332	86,698	93,885	94,549	97,573	99,133	94,385	80,162	91,324	83,919	80,145	1,051,348
2010	74,617	66,644	82,824	89,112	90,075	90,440	89,422						583,134

MONTHLY CAPACITY
2008-2010



	Jan	Feb	Mar	Apr	May	Jun	Jul	Aug	Sep	Oct	Nov	Dec	Grand Total
2008	72,442	64,660	77,757	74,194	72,181	78,038	79,997	77,854	74,605	79,550	72,282	76,242	899,802
2009	71,390	64,540	71,456	68,416	68,469	65,527	66,054	65,630	55,990	57,928	61,916	67,014	784,330
2010	64,552	55,614	58,954	58,624	60,160	60,900	63,080						421,884