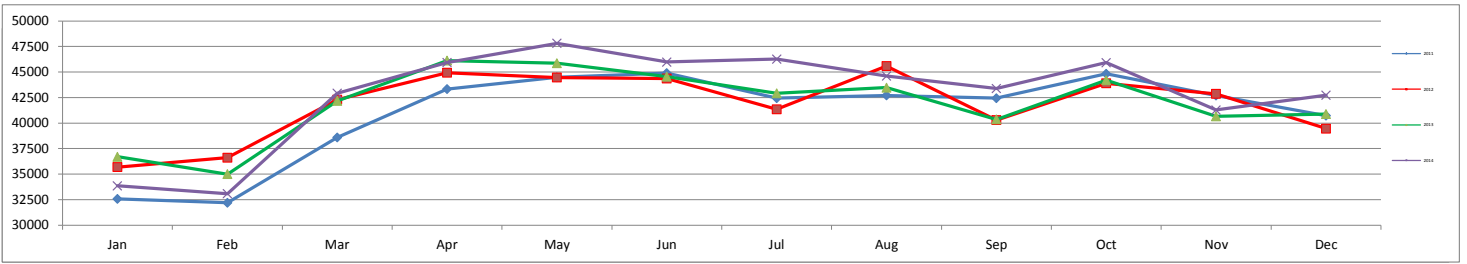




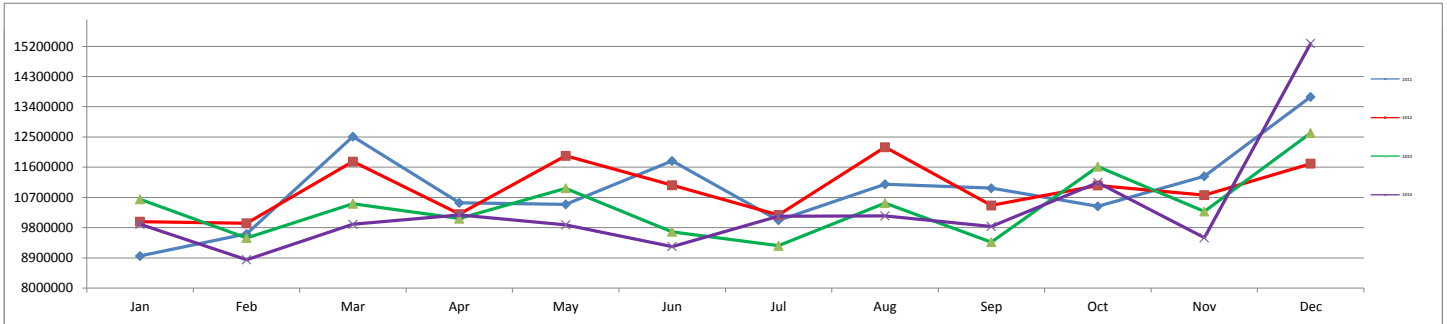
	Month			Year-to-Date		
	Dec-14	Dec-13	% Change	2014	2013	% Change
ENPLANED PASSENGERS						
AMERICAN EAGLE	3,521	3,219	9.38%	41,681	42,329	-1.53%
UNITED EXPRESS	5,091	5,579	-8.75%	70,348	68,762	2.31%
CONTINENTAL	3,568	2,372	50.42%	23,435	22,464	4.32%
DELTA	17,338	16,366	5.94%	215,924	217,750	-0.84%
PIEDMONT / US AIRWAYS	13,010	13,040	-0.23%	159,958	148,384	7.80%
ALLEGiant	0	0	0.00%	157	106	48.11%
REPUBLIC AIRLINES	197	171	15.20%	2,148	2,189	-1.87%
VISION AIR	0	136	-100.00%	118	940	-87.45%
Enplaned Passenger Total	42,725	40,883	4.51%	513,769	502,924	2.16%
LANDED WEIGHT (1,000 LB UNITS)						
AMERICAN EAGLE	3,747	3,446	8.73%	44,605	52,125	-14.43%
UNITED EXPRESS	5,546	6,768	-18.06%	88,679	91,542	-3.13%
CONTINENTAL	3,678	2,493	47.53%	26,873	27,027	-0.57%
DELTA	18,910	18,248	3.63%	262,917	262,393	0.20%
PIEDMONT / US AIRWAYS	15,517	15,689	-1.10%	189,009	194,722	-2.93%
ALLEGiant	0	0	0.00%	279	549	-49.18%
REPUBLIC AIRLINES	388	485	-20.00%	4,656	4,664	-0.17%
VISION AIR	0	248	-100.00%	247	1,736	-85.77%
Subtotal	47,786	47,377	0.86%	617,265	634,758	-2.76%
MOUNTAIN AIR CARGO	723	723	0.00%	9,239	9,556	-3.32%
FEDERAL EXPRESS	11,499	8,605	33.63%	95,572	95,697	-0.13%
UNITED PARCEL SERVICE	41,969	32,711	28.30%	266,321	261,859	1.70%
WIGGINS	288	0	100.00%	2,758	0	100.00%
MARTINAIRE	230	587	-60.82%	3,924	4,960	-20.89%
AIR CARGO CARRIERS	2,001	1,911	4.71%	16,555	19,153	-13.56%
Subtotal	56,710	44,537	27.33%	394,369	391,225	0.80%
Landed Weight Total	104,496	91,914	13.69%	1,011,634	1,025,983	-1.40%
LANDINGS						
AMERICAN EAGLE	86	79	8.86%	1,025	1,033	-0.77%
UNITED EXPRESS	118	144	-18.06%	1,892	1,954	-3.17%
CONTINENTAL	84	57	47.37%	614	619	-0.81%
DELTA	267	311	-14.15%	3,550	4,098	-13.37%
PIEDMONT / US AIRWAYS	341	337	1.19%	4,079	4,235	-3.68%
ALLEGiant	0	0	0.00%	2	4	-50.00%
REPUBLIC AIRLINES	4	5	-20.00%	48	48	0.00%
VISION AIR	0	2	-100.00%	2	14	-85.71%
Subtotal	900	935	-3.74%	11,212	12,005	-6.61%
MOUNTAIN AIR CARGO	21	20	5.00%	258	265	-2.64%
FEDERAL EXPRESS	50	37	35.14%	473	477	-0.84%
UNITED PARCEL SERVICE	125	106	17.92%	930	928	0.22%
WIGGINS	22	0	100.00%	212	0	100.00%
MARTINAIRE	27	69	-60.87%	312	583	-46.48%
AIR CARGO CARRIERS	80	81	-1.23%	743	803	-7.47%
Subtotal	325	313	3.83%	2,928	3,056	-4.19%
Landings Total	1,225	1,248	-1.84%	14,140	15,061	-6.12%
ENPLANED FREIGHT / CARGO						
DELTA	4	3	33.33%	57	52	9.62%
MOUNTAIN AIR CARGO	67	59	13.56%	723	675	7.11%
FEDERAL EXPRESS	764	726	5.23%	8,408	7,918	6.19%
UNITED PARCEL SERVICE	3,300	2,383	38.48%	22,668	21,932	3.36%
WIGGINS	7	0	100.00%	60	0	100.00%
MARTINAIRE	9	31	-70.97%	202	247	-18.22%
AIR CARGO CARRIERS	70	98	-28.57%	856	817	4.77%
Enplaned Cargo Total	4,221	3,300	27.91%	32,974	31,641	4.21%

**MONTHLY ENPLANED PASSENGERS
2011-2014**



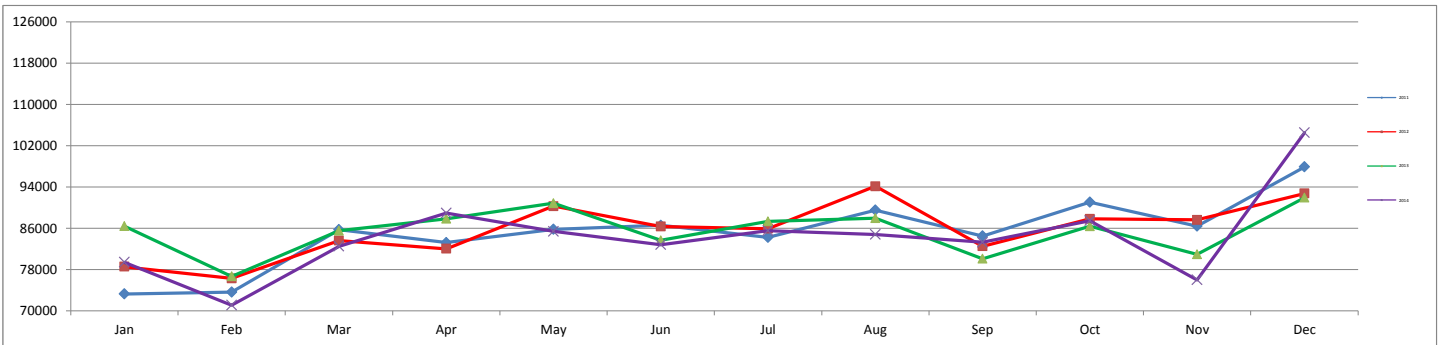
	Jan	Feb	Mar	Apr	May	Jun	Jul	Aug	Sep	Oct	Nov	Dec	Grand Total
2011	32,579	32,203	38,591	43,336	44,491	44,900	42,435	42,702	42,437	44,828	42,696	40,723	491,921
2012	35,690	36,618	42,290	44,931	44,462	44,358	41,347	45,589	40,292	43,899	42,871	39,459	501,806
2013	36,517	35,006	42,175	46,129	45,865	44,557	42,912	43,476	40,365	44,196	40,657	40,883	502,738
2014	33,851	33,094	42,923	45,935	47,810	45,975	46,258	44,601	43,391	45,921	41,285	42,725	513,769

**MONTHLY TOTAL CARGO
2011-2014**



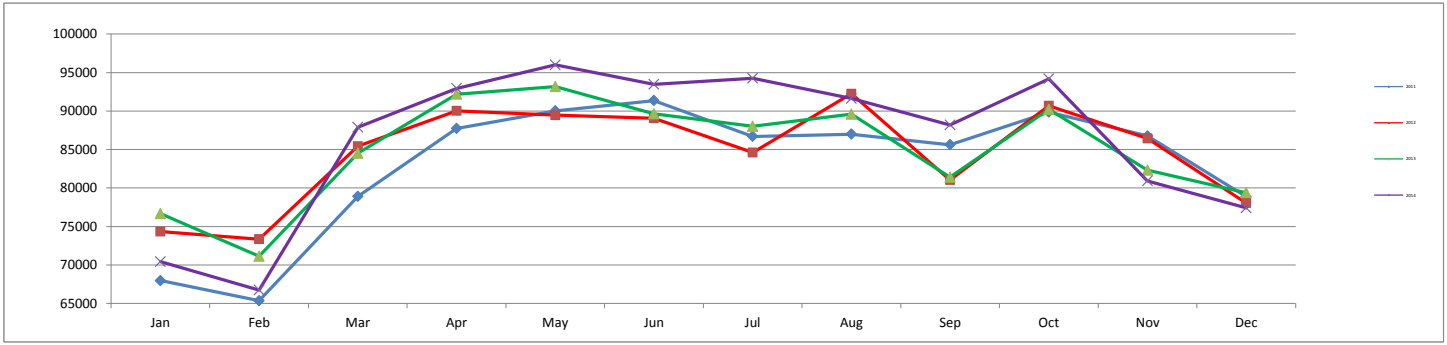
	Jan	Feb	Mar	Apr	May	Jun	Jul	Aug	Sep	Oct	Nov	Dec	Grand Total
2011	8,954,000	9,612,000	12,508,000	10,540,000	10,488,000	11,784,000	10,018,000	11,094,000	10,974,000	10,434,000	11,330,000	13,696,000	131,432,000
2012	9,974,000	9,930,000	11,766,000	10,204,000	11,938,000	11,064,000	10,176,000	12,194,000	10,460,000	11,056,000	10,768,000	11,704,000	131,234,000
2013	10,644,000	9,494,000	10,510,000	10,068,000	10,972,000	9,676,000	9,260,000	10,534,000	9,370,000	11,616,000	10,280,000	12,618,000	125,042,000
2014	9,898,000	8,846,000	9,900,000	10,180,000	9,884,000	9,238,000	10,136,000	10,152,000	9,834,000	11,144,000	9,500,000	15,286,000	123,998,000

**MONTHLY LANDED WEIGHT
2011-2014**



	Jan	Feb	Mar	Apr	May	Jun	Jul	Aug	Sep	Oct	Nov	Dec	Grand Total
2011	73,261	73,616	85,734	83,201	85,785	86,553	84,234	89,509	84,500	91,052	86,402	97,881	1,021,728
2012	78,544	76,255	83,616	82,018	90,270	86,327	85,913	94,119	82,513	87,790	87,602	92,732	1,027,699
2013	86,396	76,686	85,504	87,833	90,837	83,653	87,337	87,927	80,081	86,381	80,947	91,914	1,025,496
2014	79,392	71,097	82,511	88,911	85,392	82,805	85,518	84,810	83,276	87,442	75,984	104,496	1,011,634

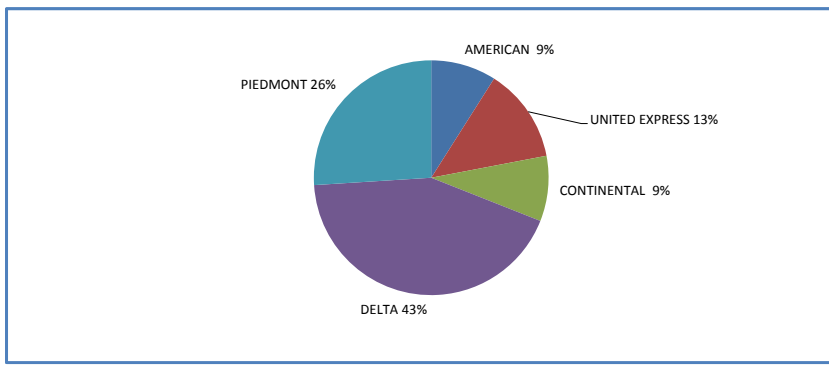
**MONTHLY TOTAL PASSENGERS
2011-2014**



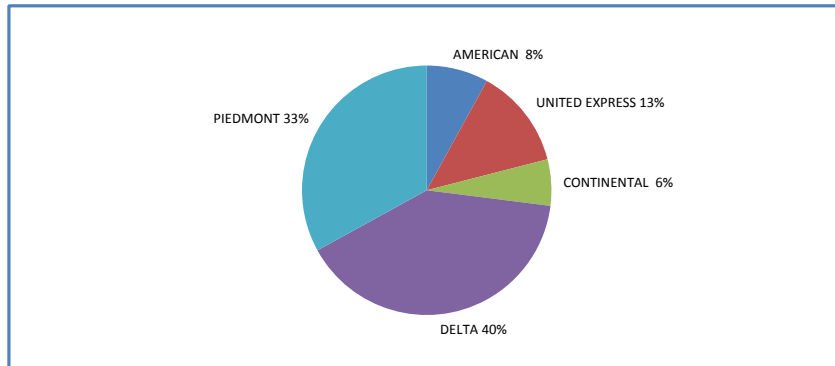
	Jan	Feb	Mar	Apr	May	Jun	Jul	Aug	Sep	Oct	Nov	Dec	Grand Total
2011	67,962	65,338	78,907	87,742	90,030	91,366	86,706	86,998	85,623	89,864	86,756	78,866	996,158
2012	74,334	73,358	85,435	90,032	89,456	89,075	84,604	92,248	81,045	90,678	86,441	78,043	1,014,749
2013	76,663	71,491	84,809	92,197	93,179	89,633	88,003	89,591	81,398	90,212	82,327	79,380	1,018,883
2014	70,428	67,039	88,381	92,948	96,006	93,477	94,265	91,628	88,201	94,194	80,927	77,408	1,034,902

YEAR - TO - DATE MARKET SHARE BY CARRIER

2014



2013



2012

