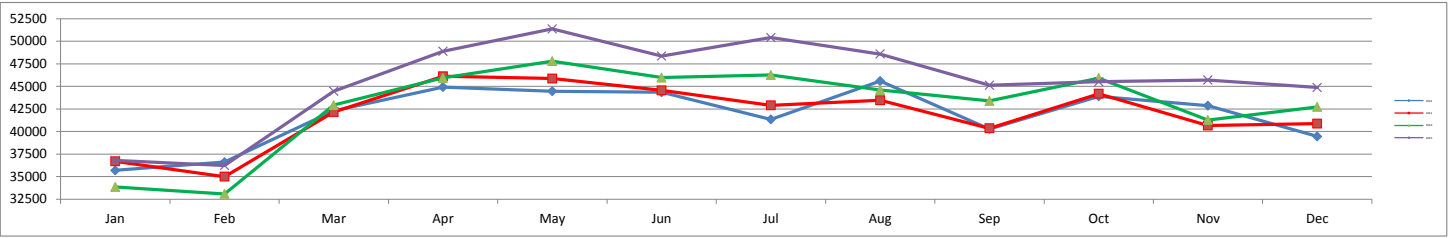
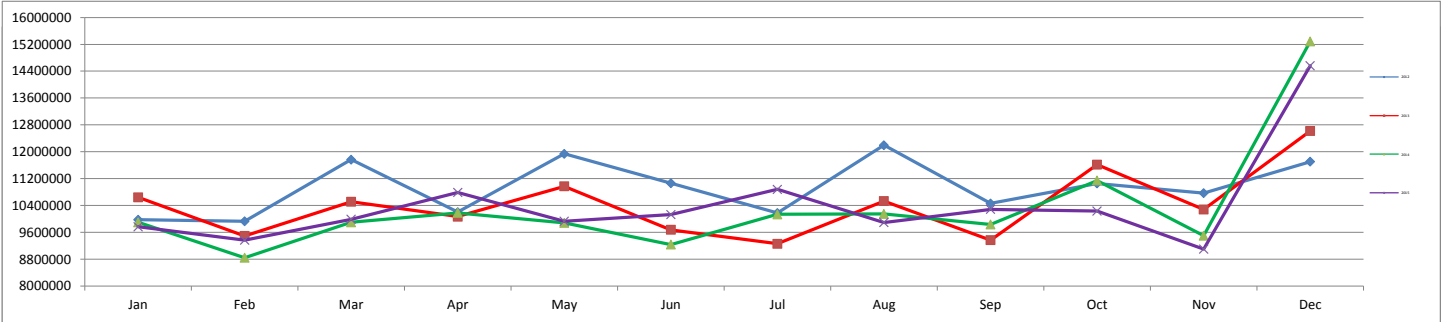
 COLUMBIA METROPOLITAN AIRPORT	Month			Year-to-Date		
	Dec-15	Dec-14	% Change	2015	2014	% Change
ENPLANED PASSENGERS						
AMERICAN EAGLE	17,859	16,531	8.03%	216,111	201,639	7.18%
UNITED EXPRESS	8,020	8,659	-7.38%	91,149	93,783	-2.81%
DELTA	19,003	17,338	9.60%	237,790	215,924	10.13%
ALLEGIANT	0	0	0.00%	0	157	-100.00%
REPUBLIC AIRLINES	0	197	-100.00%	1,335	2,148	-37.85%
VISION AIR	0	0	0.00%	0	118	-100.00%
Enplaned Passenger Total	44,882	42,725	5.05%	546,385	513,769	6.35%
LANDED WEIGHT (1,000 LB UNITS)						
AMERICAN EAGLE	21,747	19,264	12.89%	252,078	233,614	7.90%
UNITED EXPRESS	8,071	9,224	-12.50%	98,149	115,552	-15.06%
DELTA	22,582	18,910	19.42%	272,371	262,917	3.60%
ALLEGIANT	0	0	0.00%	0	279	-100.00%
REPUBLIC AIRLINES	0	388	-100.00%	2,839	4,656	-39.02%
VISION AIR	0	0	0.00%	0	247	-100.00%
Subtotal	52,400	47,786	9.66%	625,437	617,265	1.32%
MOUNTAIN AIR CARGO	868	723	20.06%	9,420	9,239	1.96%
FEDERAL EXPRESS	8,754	11,499	-23.87%	93,232	95,572	-2.45%
UNITED PARCEL SERVICE	44,071	41,969	5.01%	274,775	266,321	3.17%
WIGGINS	247	288	-14.24%	3,094	2,758	12.18%
MARTINAIRE	323	230	40.43%	2,392	2,655	-9.91%
AIR CARGO CARRIERS	1,567	2,001	-21.69%	18,218	17,824	2.21%
Subtotal	55,830	56,710	-1.55%	401,131	394,369	1.71%
Landed Weight Total	108,230	104,496	3.57%	1,026,568	1,011,634	1.48%
LANDINGS						
AMERICAN EAGLE	425	427	-0.47%	5,126	5,104	0.43%
UNITED EXPRESS	167	202	-17.33%	2,048	2,506	-18.28%
DELTA	293	267	9.74%	3,488	3,550	-1.75%
ALLEGIANT	0	0	0.00%	0	2	-100.00%
REPUBLIC AIRLINES	0	4	-100.00%	30	48	-37.50%
VISION AIR	0	0	0.00%	0	2	-100.00%
Subtotal	885	900	-1.67%	10,692	11,212	-4.64%
MOUNTAIN AIR CARGO	24	21	14.29%	261	258	1.16%
FEDERAL EXPRESS	42	50	-16.00%	467	473	-1.27%
UNITED PARCEL SERVICE	137	125	9.60%	971	930	4.41%
WIGGINS	19	22	-13.64%	238	212	12.26%
MARTINAIRE	38	27	40.74%	281	312	-9.94%
AIR CARGO CARRIERS	63	80	-21.25%	759	743	2.15%
Subtotal	323	325	-0.62%	2,977	2,928	1.67%
Landings Total	1,208	1,225	-1.39%	13,669	14,140	-3.33%
ENPLANED FREIGHT / CARGO						
DELTA	5	4	25.00%	53	57	-7.02%
MOUNTAIN AIR CARGO	75	67	11.94%	830	723	14.80%
FEDERAL EXPRESS	735	764	-3.80%	8,251	8,408	-1.87%
UNITED PARCEL SERVICE	2,913	3,300	-11.73%	22,850	22,668	0.80%
WIGGINS	12	7	71.43%	87	60	45.00%
MARTINAIRE	13	9	44.44%	182	202	-9.90%
AIR CARGO CARRIERS	39	70	-44.29%	730	856	-14.72%
Enplaned Cargo Total	3,792	4,221	-10.16%	32,983	32,974	0.03%

**MONTHLY ENPLANED PASSENGERS
2012-2015**



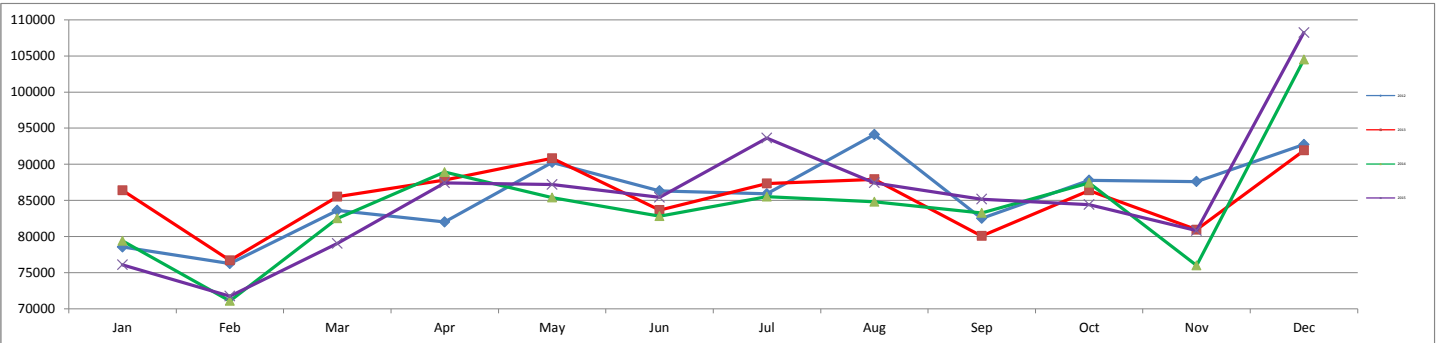
	Jan	Feb	Mar	Apr	May	Jun	Jul	Aug	Sep	Oct	Nov	Dec	Grand Total
2012	35,690	36,618	42,290	44,931	44,462	44,358	41,347	45,589	40,292	43,899	42,871	39,459	501,806
2013	36,517	35,006	42,175	46,129	45,865	44,557	42,912	43,476	40,365	44,196	40,657	40,883	502,738
2014	33,851	33,094	42,923	45,935	47,810	45,975	46,258	44,601	43,391	45,921	41,285	42,725	513,769
2015	36,802	36,231	44,464	48,899	51,377	48,369	50,406	48,591	45,138	45,515	45,712	44,882	546,386

**MONTHLY TOTAL CARGO
2012-2015**



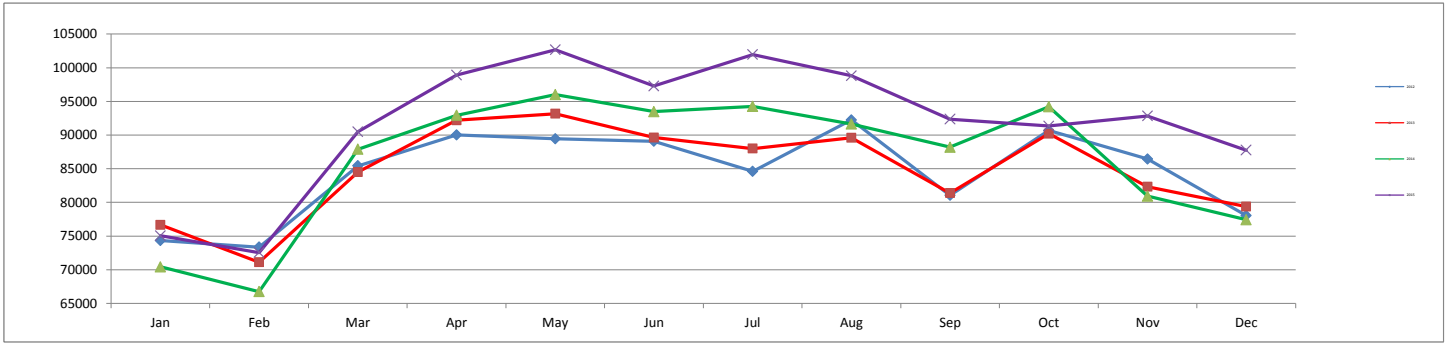
	Jan	Feb	Mar	Apr	May	Jun	Jul	Aug	Sep	Oct	Nov	Dec	Grand Total
2012	9,974,000	9,930,000	11,766,000	10,204,000	11,938,000	11,064,000	10,176,000	12,194,000	10,460,000	11,056,000	10,768,000	11,704,000	131,234,000
2013	10,644,000	9,494,000	10,510,000	10,068,000	10,972,000	9,676,000	9,260,000	10,534,000	9,370,000	11,616,000	10,280,000	12,618,000	125,042,000
2014	9,898,000	8,846,000	9,900,000	10,180,000	9,884,000	9,238,000	10,136,000	10,152,000	9,834,000	11,144,000	9,500,000	15,286,000	123,998,000
2015	9,768,000	9,370,000	9,988,000	10,788,000	9,930,000	10,126,000	10,880,000	9,892,000	10,286,000	10,234,000	9,100,000	14,564,000	124,926,000

**MONTHLY LANDED WEIGHT
2012-2015**



	Jan	Feb	Mar	Apr	May	Jun	Jul	Aug	Sep	Oct	Nov	Dec	Grand Total
2012	78,544	76,255	83,616	82,018	90,270	86,327	85,913	94,119	82,513	87,790	87,602	92,732	1,027,699
2013	86,396	76,686	85,504	87,833	90,837	83,653	87,337	87,927	80,081	86,381	80,947	91,914	1,025,496
2014	79,392	71,097	82,511	88,911	85,392	82,805	85,518	84,810	83,276	87,442	75,984	104,496	1,011,634
2015	76,081	71,755	79,034	87,409	87,187	85,418	93,617	87,441	85,175	84,411	80,810	108,230	1,026,568

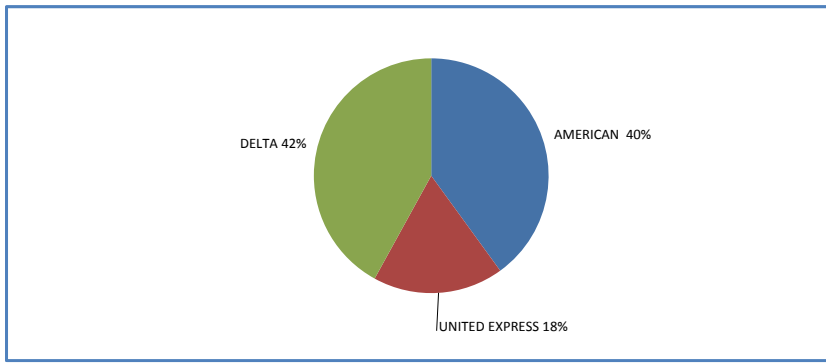
**MONTHLY TOTAL PASSENGERS
2012-2015**



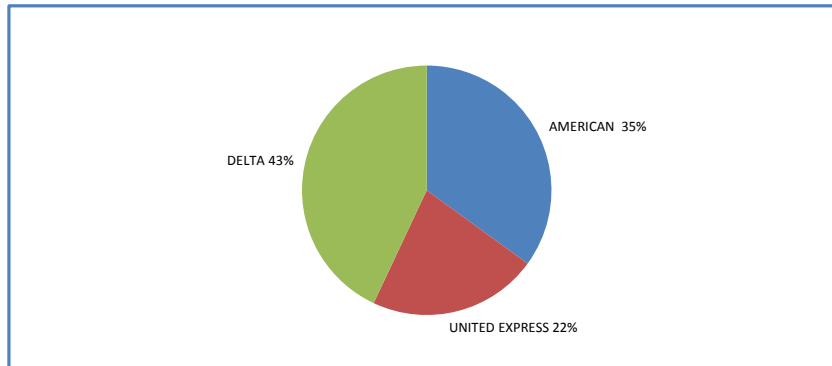
	Jan	Feb	Mar	Apr	May	Jun	Jul	Aug	Sep	Oct	Nov	Dec	Grand Total
2012	74,334	73,358	85,435	90,032	89,456	89,075	84,604	92,248	81,045	90,678	86,441	78,043	1,014,749
2013	76,663	71,491	84,809	92,197	93,179	89,633	88,003	89,591	81,398	90,212	82,327	79,380	1,018,883
2014	70,428	67,039	88,381	92,948	96,006	93,477	94,265	91,628	88,201	94,194	80,927	77,408	1,034,902
2015	75,032	72,546	90,492	98,900	102,669	97,297	101,960	98,804	92,360	91,339	92,846	87,766	1,102,011

YEAR - TO - DATE MARKET SHARE BY CARRIER

2015



2014



2013

