
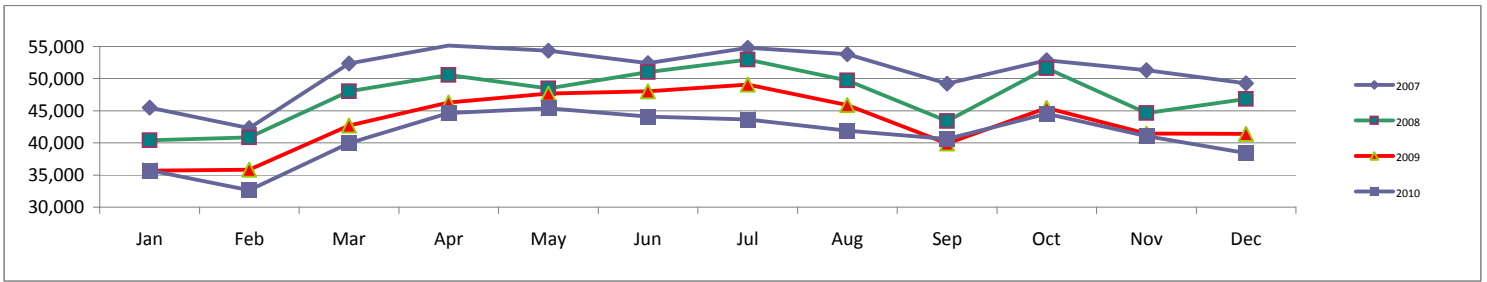


AIRPORT OPERATIONS SUMMARY OF KEY ACTIVITIES

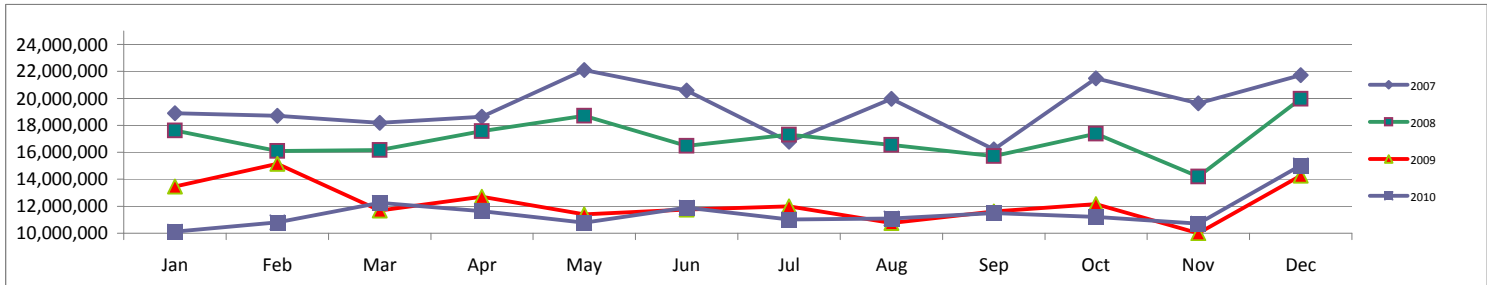
 COLUMBIA METROPOLITAN AIRPORT	Month			Year-to-Date		
	Dec-10	Dec-09	% Change	2010	2009	% Change
ENPLANED PASSENGERS						
AMERICAN EAGLE	3,278	3,493	-6.16%	40,713	40,570	0.35%
UNITED EXPRESS	6,095	7,172	-15.02%	79,195	83,141	-4.75%
CONTINENTAL	2,457	2,575	-4.58%	23,254	38,875	-40.18%
DELTA	15,125	15,777	-4.13%	204,203	208,018	-1.83%
PIEDMONT / US AIRWAYS	11,461	12,390	-7.50%	145,233	137,453	5.66%
SPIRIT	0	0	0.00%	0	2,260	-100.00%
ALLEGIANT	0	0	0.00%	0	10,045	-100.00%
Enplaned Passenger Total	38,416	41,407	-7.22%	492,598	520,362	-5.34%
LANDED WEIGHT (1,000 LB UNITS)						
AMERICAN EAGLE	3,949	3,885	1.65%	47,260	46,995	0.56%
UNITED EXPRESS	9,294	10,447	-11.04%	114,717	127,756	-10.21%
CONTINENTAL	2,905	3,008	-3.42%	29,090	52,304	-44.38%
DELTA	18,459	20,541	-10.14%	258,418	277,436	-6.85%
PIEDMONT / US AIRWAYS	16,691	16,255	2.68%	197,690	198,989	-0.65%
SPIRIT	0	0	0.00%	0	3,444	-100.00%
ALLEGIANT	0	0	0.00%	0	15,041	-100.00%
Subtotal	51,298	54,136	-5.24%	647,175	721,965	-10.36%
MOUNTAIN AIR CARGO	832	796	4.52%	9,412	9,244	1.81%
FEDERAL EXPRESS	10,666	9,741	9.50%	81,949	108,521	-24.49%
UNITED PARCEL SERVICE	43,512	49,097	-11.38%	308,521	446,023	-30.83%
ABX	0	0	0.00%	0	1,122	-100.00%
Subtotal	55,010	59,634	-7.75%	399,882	564,910	-29.21%
Landed Weight Total	106,308	113,770	-6.56%	1,047,057	1,286,875	-18.64%
LANDINGS						
AMERICAN EAGLE	93	89	4.49%	1,083	1,084	-0.09%
UNITED EXPRESS	200	221	-9.50%	2,449	2,708	-9.56%
CONTINENTAL	66	69	-4.35%	662	1,195	-44.60%
DELTA	337	410	-17.80%	4,866	5,359	-9.20%
PIEDMONT / US AIRWAYS	368	350	5.14%	4,332	4,386	-1.23%
SPIRIT	0	0	0.00%	0	25	-99.99%
ALLEGIANT	0	0	0.00%	0	110	-100.00%
Subtotal	1,064	1,139	-6.58%	13,392	14,867	-9.92%
MOUNTAIN AIR CARGO	23	22	4.55%	328	287	14.29%
FEDERAL EXPRESS	59	37	59.46%	460	433	6.24%
UNITED PARCEL SERVICE	142	159	-10.69%	1,094	1,611	-32.09%
ABX	0	0	0.00%	0	11	-99.98%
Subtotal	224	218	2.75%	1,882	2,342	-19.64%
Landings Total	1,288	1,357	-5.08%	15,274	17,209	-11.24%
ENPLANED FREIGHT / CARGO						
DELTA	0	6	-100.00%	0	48	-100.00%
Subtotal	0	6	-100.00%	0	48	-100.00%
MOUNTAIN AIR CARGO	64	54	18.52%	637	570	11.70%
FEDERAL EXPRESS	705	923	-23.62%	7,800	11,283	-30.87%
UNITED PARCEL SERVICE	2,806	2888	-2.84%	24,199	26,536	-8.81%
ABX	0	0	0.00%	0	40	-100.00%
Subtotal	3,575	3,865	-7.50%	32,636	38,429	-15.08%
Enplaned Cargo Total	3,575	3,871	-7.65%	32,636	38,477	-15.18%

**MONTHLY ENPLANED PASSENGERS
2007-2010**



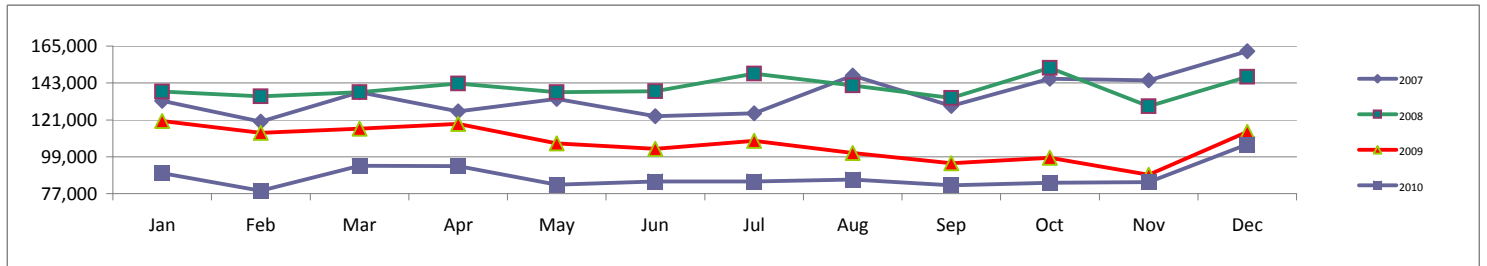
	Jan	Feb	Mar	Apr	May	Jun	Jul	Aug	Sep	Oct	Nov	Dec	Grand Total
2007	45,499	42,296	52,339	55,135	54,339	52,403	54,779	53,793	49,235	52,840	51,305	49,270	613,233
2008	40,429	40,876	48,030	50,548	48,464	51,030	52,966	49,702	43,382	51,614	44,656	46,823	568,520
2009	35,661	35,848	42,683	46,290	47,685	48,040	49,053	45,905	39,915	45,426	41,461	41,407	519,374
2010	35,739	32,645	39,942	44,627	45,370	44,112	43,647	41,920	40,611	44,536	41,033	38,416	492,598

**MONTHLY TOTAL CARGO
2007-2010**



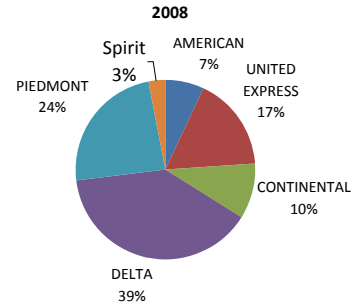
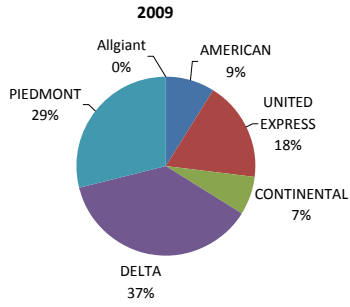
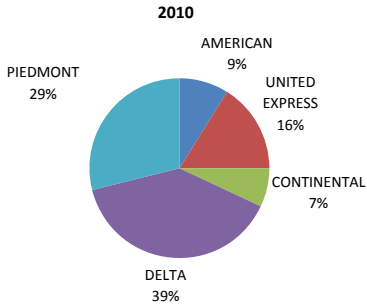
	Jan	Feb	Mar	Apr	May	Jun	Jul	Aug	Sep	Oct	Nov	Dec	Grand Total
2007	18,906,000	18,706,000	18,192,000	18,632,000	22,100,000	20,582,000	16,794,000	19,964,000	16,210,000	21,484,000	19,636,000	21,714,000	232,920,000
2008	17,608,000	16,098,000	16,170,000	17,572,000	18,710,000	16,490,000	17,304,000	16,550,000	15,718,000	17,382,000	14,194,000	19,972,000	203,768,000
2009	13,462,000	15,142,000	11,696,000	12,706,000	11,412,000	11,766,000	12,004,000	10,762,000	11,624,000	12,148,000	10,006,000	14,284,000	147,012,000
2010	10,108,000	10,796,000	12,252,000	11,634,000	10,780,000	11,906,000	11,010,000	11,090,000	11,498,000	11,212,000	10,712,000	15,026,000	138,024,000

**MONTHLY LANDED WEIGHT - 1,000 lb UNITS
2007-2010**

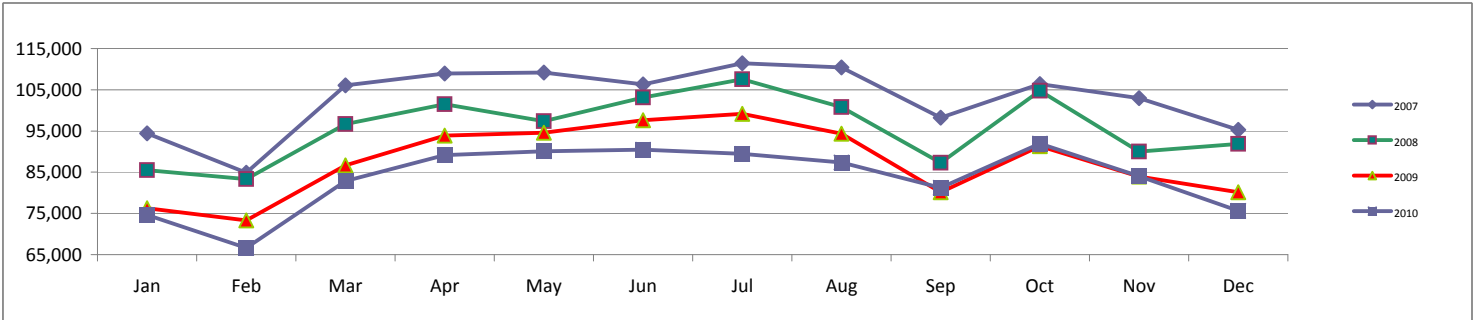


	Jan	Feb	Mar	Apr	May	Jun	Jul	Aug	Sep	Oct	Nov	Dec	Grand Total
2007	132,379	119,898	137,479	126,034	133,449	123,119	124,988	147,394	129,242	145,537	144,654	161,947	1,626,120
2008	137,970	134,938	137,605	142,613	137,510	138,029	148,636	141,500	133,986	151,986	129,143	146,766	1,680,682
2009	120,399	113,235	115,695	118,528	106,891	103,739	108,474	101,179	95,091	98,384	88,327	113,770	1,283,712
2010	89,186	78,781	93,615	93,351	82,421	84,311	84,275	85,426	81,931	83,530	83,922	106,308	1,047,057

YEAR - TO - DATE MARKET SHARE BY CARRIER

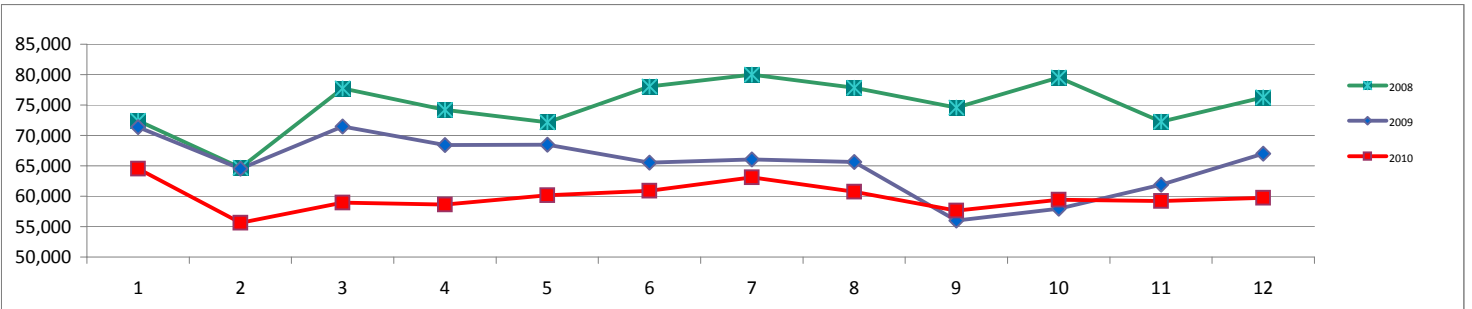


MONTHLY TOTAL PASSENGERS
2007-2010



	Jan	Feb	Mar	Apr	May	Jun	Jul	Aug	Sep	Oct	Nov	Dec	Grand Total
2007	94,387	84,896	106,042	108,963	109,204	106,336	111,460	110,396	98,200	106,419	102,945	95,299	1,234,547
2008	85,494	83,340	96,697	101,508	97,353	103,114	107,585	100,765	87,261	104,722	89,982	91,861	1,149,682
2009	76,243	73,332	86,698	93,885	94,549	97,573	99,133	94,385	80,162	91,324	83,919	80,145	1,051,348
2010	74,617	66,644	82,824	89,112	90,075	90,440	89,422	87,345	81,195	91,979	84,058	75,664	1,003,375

MONTHLY CAPACITY
2008-2010



	Jan	Feb	Mar	Apr	May	Jun	Jul	Aug	Sep	Oct	Nov	Dec	Grand Total
2008	72,442	64,660	77,757	74,194	72,181	78,038	79,997	77,854	74,605	79,550	72,282	76,242	899,802
2009	71,390	64,540	71,456	68,416	68,469	65,527	66,054	65,630	55,990	57,928	61,916	67,014	784,330
2010	64,552	55,614	58,954	58,624	60,160	60,900	63,080	60,730	57,650	59,430	59,200	59,730	718,624